

DETAILED DESIGN

Walk your facility *before* a shovel hits the ground.

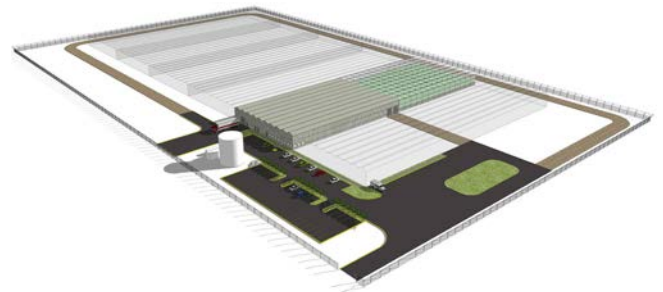
- ✓ Visualize process flow
- ✓ Experience people flow
- ✓ No operational surprises

This phase of the project is a precursor to the RFP stage. A detailed design of the facility is generated including all systems spanning from greenhouse design, HVAC, to production systems. Of great importance to the client is the main outcome of this step – drawings. The numerous detailed drawings created by our team illustrate function and flow of each critical area of the facility, while also providing a general overview of the full project scope.

Our approach is based on a comprehensive knowledge of optimal technological systems integration which sustain maximum, yet flexible, output of your future facility. Concurrent collaborative methods create an integrative platform which begins at the start of project planning. Our teams create designs inclusive of: finance, legislation, process control and automation, security, procurement, project management, construction, commissioning, growing, maintenance, and more. We strongly believe our collaborative approach eliminates surprises and delays, whether during construction or years down the road after operations began.

The layout of the facility is designed inclusive of optimal flow for your crop which in turn results in increased productivity levels and decreased cost per kilo. Finally, because operational cost is

one of the primary concerns in all efficient operations, we also provide models on energy cost, consumables, labor, and other factors in order to predict and manage operational expenses. In summary, by designing the facility inclusive of present and future needs, operational costs can be anticipated and therefore planned against and therefore mitigating risk.



DELIVERABLES

- Detailed plan and sectional drawings
- Detailed diagrams for HVAC, irrigation, electrical, growing systems, equipment, and more
- Detailed design typically includes 30-100 drawings
- Climate modeling based on historical hourly data
- HVAC modeling
- Support for system selection
- Detailed product flow analysis
- Time schedule/Gantt diagram
- Support for full permitting process

